

**8T126SY/ NB6T126SY / NBT126SY**

REPLACES: 00.00.00

REVISED: 24.09.11

**FITTING INSTRUCTIONS**

**TOYOTA HILUX 07/11on 2WD & 4WD TYPE 8,  
63mm SERIES 2 NUDGE BAR and 76mm NUDGE BAR  
VEHICLE FRONTAL PROTECTION SYSTEM (VFPS)  
FOR AIR BAG & ADR COMPLIANT VEHICLES**

Check installation hardware before commencing.

1. Lift bonnet
2. Remove grille, two plastic clips and two PK self-tappers along top, pull grille forward at top enough to access and release five fixed clips along bottom inside of grille.
3. Remove bumper cover, three plastic clips along top (grille area), one plastic clip (each side) at bumper cover top side returns, four 10mm head self-tapper on passenger side inner guard (each side), three plastic clips along bottom of bumper cover. Pull bumper cover outward at sides to release off clips.
4. Remove steel chassis cross member from front of chassis, four 14mm nuts. **See figure 1.**  
**On 4WD models:** Remove two plastic clips from plastic under guard (each side).
5. **On 4WD models** trim plastic air deflectors at top of cross member. **See figure 2.**
6. Place steel mounting brackets (supplied) on chassis studs. **See figure 3.**
7. Refit steel chassis cross member over steel mounting bracket. Use original nuts. Level and centralise steel mounting brackets with vehicle and to inside of protection bar mount measurement. **See figures 4 and 5.**  
**TIGHTEN IN POSITION. See figure 6.**
8. Place 75 x 50 x 8 steel plate (supplied) on 3/8 x 3 1/2 bolt and flat washer (supplied). Slide 50mm long steel chassis spacer pipe (supplied) over bolt. **See figure 7.** Slide through chassis.
9. Place steel mount support (supplied) over bolt on inside of chassis. Use 3/8 flat washer, spring washer and nut (supplied). Attach steel mount support to steel mounting bracket, use 3/8 x 1 1/2 bolt, nut and washers (supplied). **TIGHTEN IN POSITION. See figures 8, 9 and 10. NOTE:** On drivers side ensure air conditioning pipe is well clear of mounts. Carefully bend slightly if necessary. **See figure 11.**
10. Measure outer measurement of mounts and transfer to lower grille in bumper. Ensure marks are central to grille. Trim grille to suit placement of mounts. **See figure 12.**
11. Refit bumper cover and grille to vehicle. **See figure 13. On 4WD models refit plastic under guard.**  
**NOTE:** Centralise bumper cover with steel mounting brackets as fitting.
12. Fit ECB protection bar to outside of steel mounting brackets. Use two 3/8 x 1 1/2 bolts, nuts and washers (supplied). Align with vehicle taking note of **figures 14, 15 and 16** for side views and **figures 17, 18 and 19** for front views. **TIGHTEN ALL BOLTS NUTS.**



East Coast Bullbars (ECB Pty Ltd)

Tel: 07 3897 5700

Fax: 07 3283 1168

ecb@ecb.com.au www.ecb.com.au

WORLD'S BEST  
ALLOY BULLBARS

29 Snook St  
Clontarf QLD 4019  
Australia

Po Box 122  
Margate QLD 4019  
Australia

### ENSURE NUMBER PLATE IS CLEARLY VISABLE

**Note:** When fitting/refitting the licence plate to the vehicle, ensure there is no obstruction to licence plate vision in accordance with local authorities. If required relocate licence plate to an alternate location.

#### Further VFPS Notes:

- a) Do not attach VFPS to the vehicle using anchorages not intended for this purpose (e.g. engine mounting bolts).
- b) Do not use this product for any vehicle make or model, other than those specified by the VFPS manufacturer.
- c) Do not remove the plaque or label from the VFPS.
- d) Do not modify the structure of the VFPS in any way.
- e) No accessory or fitment should project forward of the VFPS forward profile.
- f) **ENSURE THESE INSTRUCTIONS ARE LEFT WITH VEHICLE OWNER AND/OR OPERATOR.**

### IMPORTANT INFORMATION

Periodically check bolts and nuts for correct tightness, especially if travelling on rough roads

### FITTING KIT

1 – Pair steel mounting brackets	6 – 3/8 x 1 1/2 bolts
2 – Steel mount supports.	16 – 3/8 flat washers.
2 – 75 x 50 x 8mm steel plate with 10mm hole in centre	8 – 3/8 spring washers.
2 – 52mm long 10 N.B steel pipe spacers.	8 – 3/8 nuts
2 – 3/8 x 3 1/2 bolt	

Remove cross member



Figure 1



Figure 2: Trim lower section from air dam.  
Passengers side shown.



East Coast Bullbars (ECB Pty Ltd)

Tel: 07 3897 5700

Fax: 07 3283 1168

ecb@ecb.com.au www.ecb.com.au

WORLD'S BEST  
ALLOY BULLBARS

29 Snook St  
Clontarf QLD 4019  
Australia

Po Box 122  
Margate QLD 4019  
Australia



Figure 3 – Drivers side shown

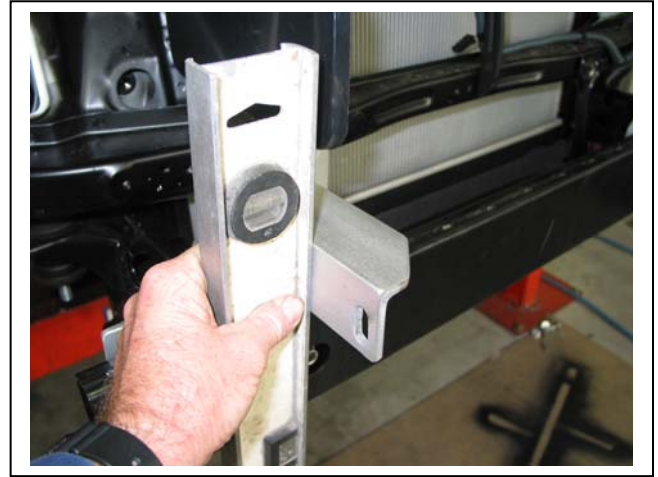


Figure 4 – Shown levelling drivers side steel mounting bracket



Figure 5 – Drivers side shown centralising steel mounting bracket



Figure 6

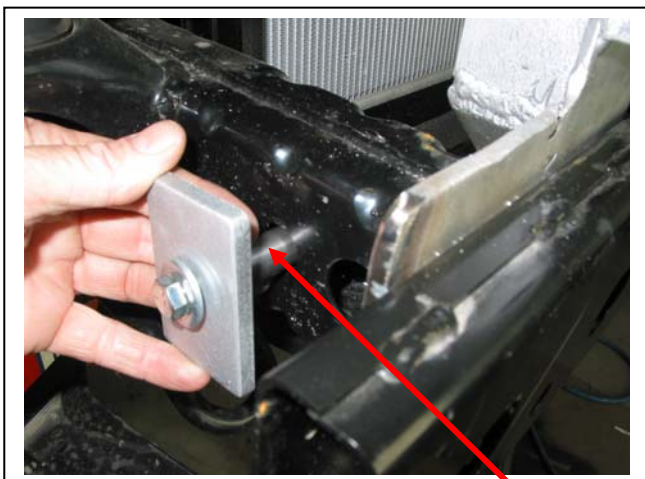


Figure 7 Steel pipe spacer Steel mount support

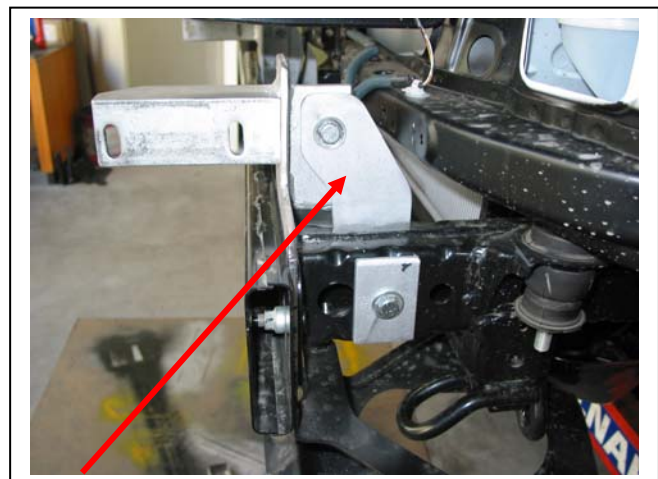


Figure 8 – Passenger side shown



East Coast Bullbars (ECB Pty Ltd)

Tel: 07 3897 5700

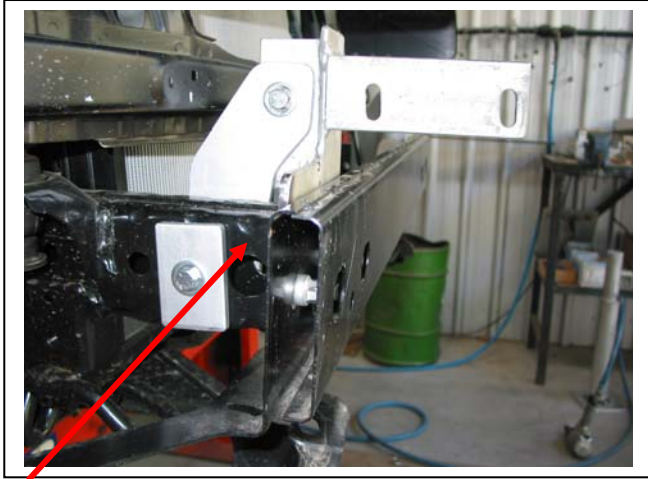
Fax: 07 3283 1168

ecb@ecb.com.au www.ecb.com.au

WORLD'S BEST  
ALLOY BULLBARS

29 Snook St  
Clontarf QLD 4019  
Australia

Po Box 122  
Margate QLD 4019  
Australia

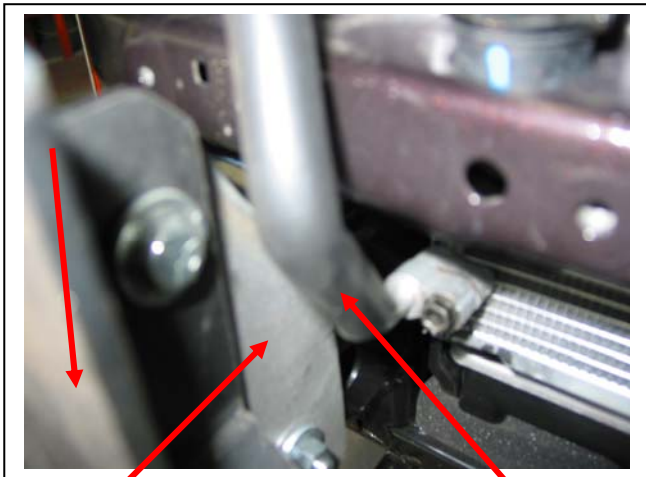


Steel mount support

Figure 9 – Drivers side shown



Figure 10 – Drivers side inside shown



Steel mounting support

Figure 11

Driver side air conditioning line



Figure 12: Trim grille to suit placement of mounts



Figure 13



Figure 14 – 76mm Nudge Bar shown



East Coast Bullbars (ECB Pty Ltd)

Tel: 07 3897 5700

Fax: 07 3283 1168

ecb@ecb.com.au www.ecb.com.au

WORLD'S BEST  
ALLOY BULLBARS

29 Snook St  
Clontarf QLD 4019  
Australia

Po Box 122  
Margate QLD 4019  
Australia

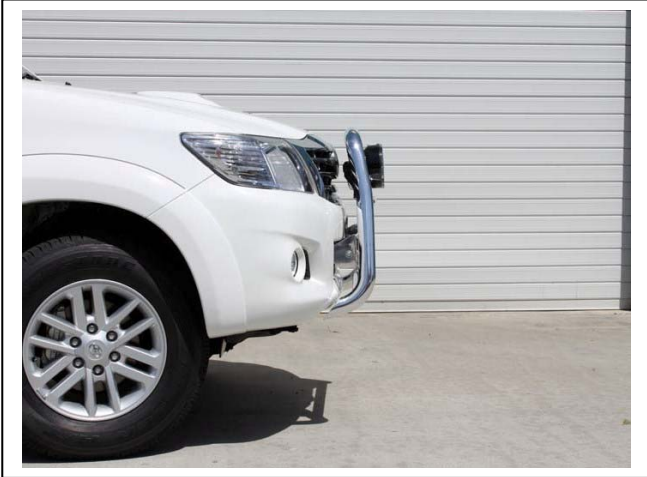


Figure 15 – 63mm Series 2 Nudge Bar shown

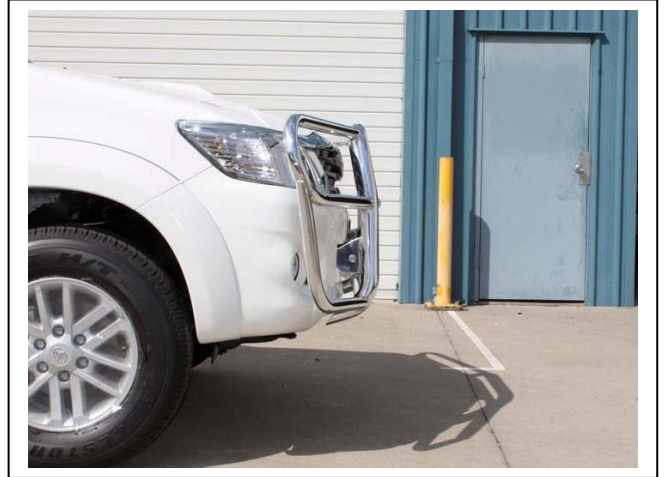


Figure 16 – Type 8 shown

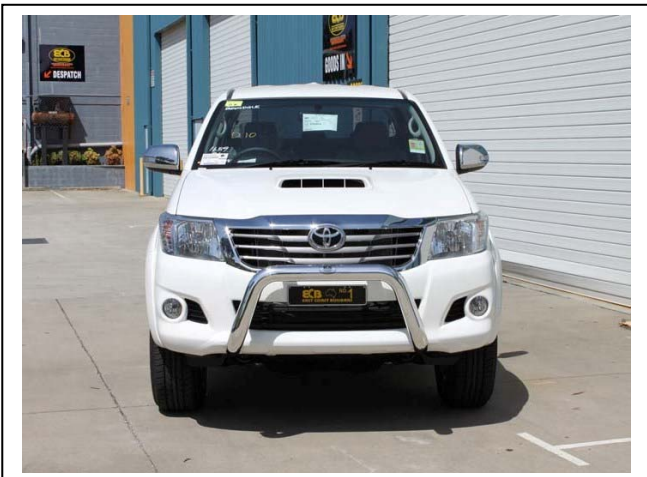


Figure 17 – 76mm Nudge Bar shown



Figure 18 – 63mm Series 2 Nudge Bar shown



Figure 19 – Type 8 shown



**WORLD'S BEST  
ALLOY BULLBARS**

**East Coast Bullbars (ECB Pty Ltd)**

Tel: 07 3897 5700

Fax: 07 3283 1168

ecb@ecb.com.au www.ecb.com.au

29 Snook St  
Clontarf QLD 4019  
Australia

Po Box 122  
Margate QLD 4019  
Australia

**We value your comments**

Dear Fitter,

ECB would like to know how you went with the installation of this product. We value your comment and may need to contact you to clarify some details so please complete your contact details clearly.

We would appreciate if you could complete as many of the following details as possible.

<b>Your Name:</b>	<b>Your contact No.</b>
<b>Product Part No.</b>	<b>Product Invoice No.</b>
<b>Product Description:</b>	<b>Make, model, and year of vehicle:</b>
<b>Product Work Order No.</b>	<b>Company your from/Company product purchased from:</b>

**Date of Fitment:** \_\_\_\_/\_\_\_\_/\_\_\_\_

Was the fitting hardware supplied complete?

Yes

No

If no what was not supplied

---

---

Did the installation go well?

Yes

No

Please provide comments

---

---

---

Please draw diagrams if you need to.

**Post to**  
Reply Paid 122  
PO Box 122  
Margate QLD 4019

**Fax to**  
(07) 3283 1168



WORLD'S BEST  
ALLOY BULLBARS

East Coast Bullbars (ECB Pty Ltd)

Tel: 07 3897 5700

Fax: 07 3283 1168

ecb@ecb.com.au www.ecb.com.au

29 Snook St  
Clontarf QLD 4019  
Australia

Po Box 122  
Margate QLD 4019  
Australia

## DESPATCH CHECKLIST 8T126SY / NB6T126SY / NBT126SY

Work Order #	
Finish:	
Transport:	
Due Date:	

- 1 – Pair steel mounting brackets (pair)
- 2 – Steel mount supports.
- 2 – 75 x 50 x 8mm steel plate with 10mm hole in centre
- 1 – Bolt kit

**See other side of  
this page for  
photos of all  
mounts**



Is this product “the best it can be” Yes \_\_\_\_\_ / \_\_\_\_\_  
Wrapper’s initials / Checker initials

If **NO** fix before continuing

All parts checked and completed by:

Nut and bolts: \_\_\_\_\_ Date \_\_\_/\_\_\_/\_\_\_

Order control: \_\_\_\_\_ Date \_\_\_/\_\_\_/\_\_\_

Final wrap check: \_\_\_\_\_ Date \_\_\_/\_\_\_/\_\_\_



**WORLD'S BEST  
ALLOY BULLBARS**

**East Coast Bullbars (ECB Pty Ltd)**

Tel: 07 3897 5700

Fax: 07 3283 1168

ecb@ecb.com.au www.ecb.com.au

29 Snook St  
Clontarf QLD 4019  
Australia

Po Box 122  
Margate QLD 4019  
Australia

